

B **BENNETTS TIMBER**
A GUIDE TO TIMBER CLADDING



01472 350151

sales@bennettstimber.co.uk

www.cladding.bennettstimber.co.uk

Timber cladding has become increasingly popular over recent years and provides an attractive, lasting and durable external finish to a building. At Bennetts Timber we specialise in the supply and manufacture of timber cladding. The preferred types of timber used are:



WESTERN RED CEDAR (*Thuja Plicata*)

Highly resistant to decay, one of the most naturally durable coniferous species available. The rich warm colours and texture together with natural preservatives in cedar ensure an attractive material that will last. Left in its natural state it will turn silvery grey when exposed to the external elements. Where required cedar can be stained or painted.



SIBERIAN LARCH (*Larix Siberica*)

High density softwood, extremely durable with up to 60 years unprotected external use. This naturally durable softwood does not need preservative treatments. Colour varies from light yellow to orange/golden brown in the heartwood. Siberian larch is a competitively priced alternative to western red cedar.



THERMOWOOD 'D'

Produced by heat treating Scandinavian softwood to temperatures in excess of 200°C. During the treatment, chemical and structural changes occur within the timber which alter and improve some of the basic characteristics. The resulting product is an altogether more durable and stable timber, ideal material for use in exposed areas such as external wall claddings.



CUMARU (*Dipteryx Odorata*)

Gaining in popularity this high density South American hardwood is extremely durable and can be used for a wide variety of purposes from external cladding to lock gates! The heartwood ranges from yellow brown to reddish brown often with darker red veins.

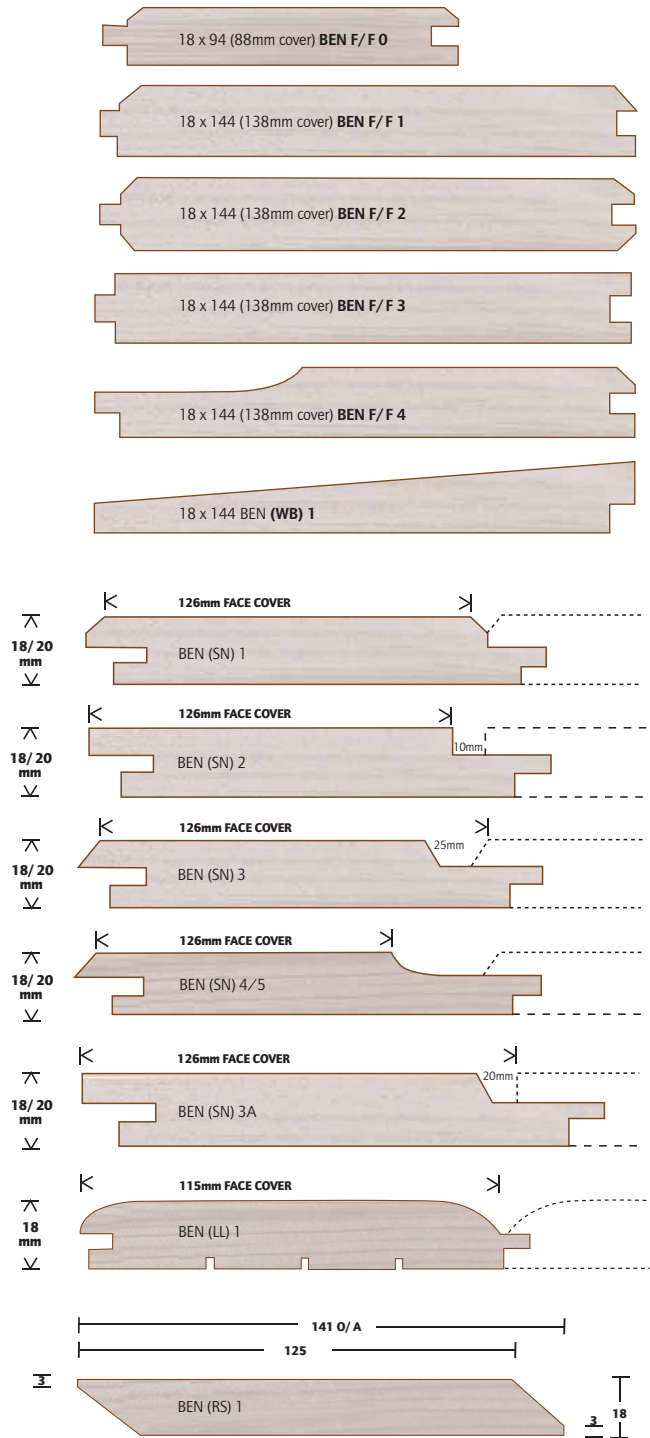


OTHER SPECIES

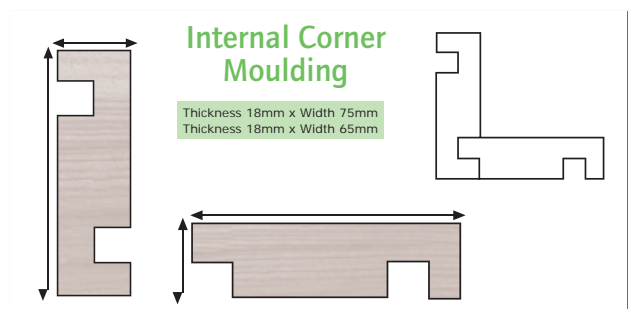
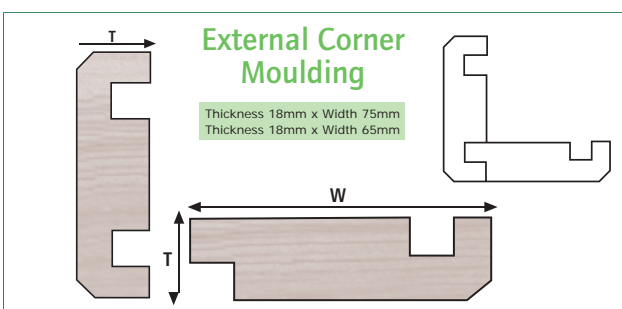
A number of other types of timber can be used for external cladding such as European oak or home grown larch – all of which can be sourced on request.

PROFILES

Our standard range of profiles is shown on the drawing below. In addition to this we can machine any bespoke non-standard profiles to your detailed requirements, including window trims and corner mouldings.

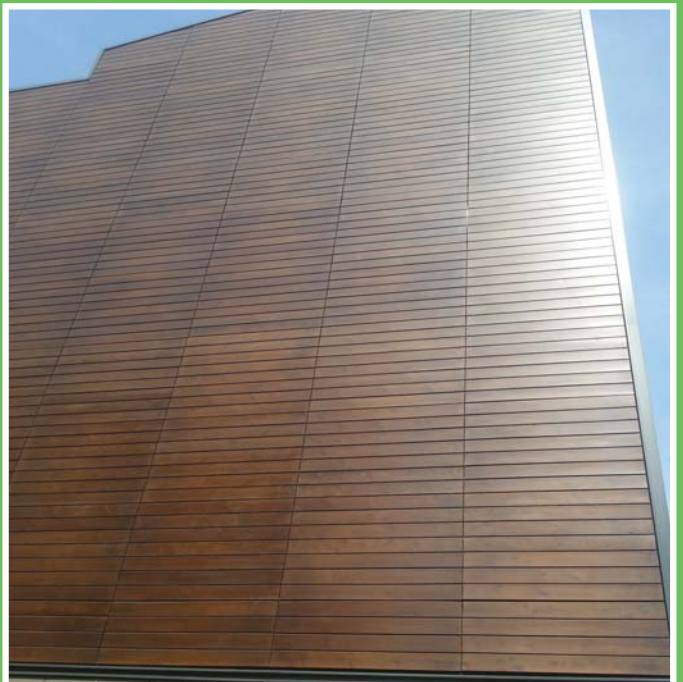


CORNER MOULDINGS



PRE-STAINED AND PAINTED CLADDING

An increasing proportion of our timber cladding is pre-stained, treated or painted at our premises before being delivered to site. We can source any suitable products from the main manufacturers such as Sikkens, Teknos, Dulux and Crown.



FIRE TREATMENTS

In a number of situations fire retardant cladding is required by specifiers or due to Building Regulations. At Bennetts Timber we are able to provide factory applied fire retardant treatment to timber cladding and other timber products using either Non-Com Exterior from Lonza Wood Protection or HR Prof from Fire Retardant UK.

PORTFOLIO

Need some inspiration?

These are some of the impressive cladding projects that we have been involved with.



Supermarket – Yate, Bristol
Siberian larch cladding



AS SEEN ON
**GRAND
DESIGNS**

Kathryn Tyler House – Falmouth, Cornwall
Our western red cedar,
18mm x 95mm secret fix profile



Private Residential Development – Cambridge
Siberian larch cladding

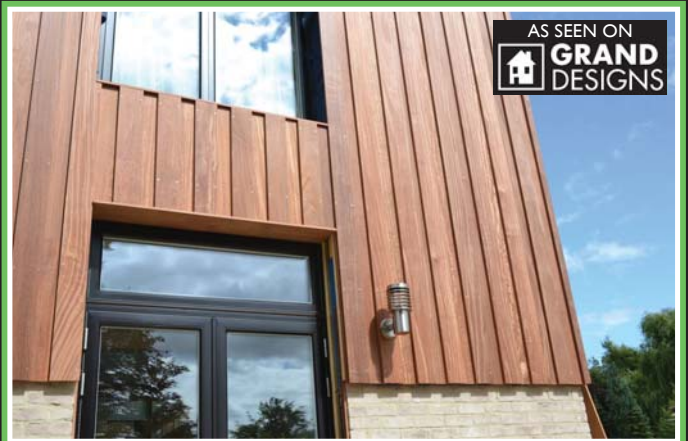


AS SEEN ON
**GRAND
DESIGNS**

Kensington Picture House – Thorne, S. Yorkshire
Our Thermowood,
18mm x 145 mm secret fix profile



Cedar Lodges – K P Club, Kilnwick Percy, East Yorkshire
Cedar used for cladding luxury cabins



AS SEEN ON
**GRAND
DESIGNS**

'The Mothership' – Poppleton, N. Yorkshire
Our Cumaru hardwood,
20mm x 145mm planed square edge boards

TECHNICAL & OTHER INFORMATION

FIXING

Typically, external cladding is fixed to a treated timber batten which in turn is fixed to the wall of the building. Battens should be at least 2.5 times the thickness of the cladding board when using standard nails or screws. If using annular ring shank nails or screws the battens can be reduced to 2 times the thickness of the board. Battens should be spaced no more than 600mm apart but this can be reduced to 400mm - 500mm. Horizontal cladding boards are fixed to vertical battens and vice-versa. However, with vertical boards a vertical counter-batten behind the horizontal batten may be required.

Only stainless steel or silicone bronze screws/nails should be used for western red cedar as the naturally acidic nature of the wood can cause staining when in contact with iron based materials, we also advise using these types of fixings for Siberian larch. Hardwood cladding, such as Cumaru, should be fixed using screws.

MOISTURE CONTROL

If the main structure is not masonry (ie brick or block) a separate impermeable membrane is required behind the cladding. A cavity of at least 19mm should be left behind the boards to allow for adequate ventilation and drainage.

WINDOW AND DOOR OPENINGS

Ideally any openings should be in multiples of the chosen board width to avoid the need to notch or split boards. It is important to have a dimensional relationship between openings and board widths for board-on-board cladding, otherwise the pattern of boarding may not relate to either side of an opening. If the sizes and locations of the openings are already determined, it may be necessary to choose a board, or vary the amount of overlap, specifically to relate to the predetermined dimensions of the openings.

CORNERS

The corner can be achieved either with a solid square section, or by forming an L-shaped corner. We are able to provide both internal and external corner mouldings.

BESPOKE MANUFACTURING SERVICE

As well as supply of standard cladding boards, at Bennetts Timber we also offer a bespoke service for the manufacture of cladding panels, louvres, fencing and gates to customer's own designs.

ACCESSORIES

We stock the full range of accessories required to install your cladding from nails and screws to saws and other handtools. We also have an extensive range of stains, silicones, glues and sealants. If you require additional paint or staining for future maintenance then we can supply that too, just ask our sales team when you order.

ENVIRONMENTAL

Bennetts Timber has Chain of Custody status through the Forestry Stewardship Council (FSC) and the Programme for the Endorsement of Forestry Certification (PEFC) Schemes. As a long standing timber merchant, having traded since 1804, we care about our responsibility to ensure that our stock and range of timber products are both legal and sustainable.

**Further technical information is available on our specialist website
www.timbercladding.net or from our expert sales team who are always happy to advise.**



Estate Road No 6 | South Humberside Industrial Estate
Grimsby | North East Lincolnshire | DN31 2TG
T: 01472 350151 | F: 01472 250053 | sales@bennettstimber.co.uk
www.cladding.bennettstimber.co.uk | www.timbercladding.net

